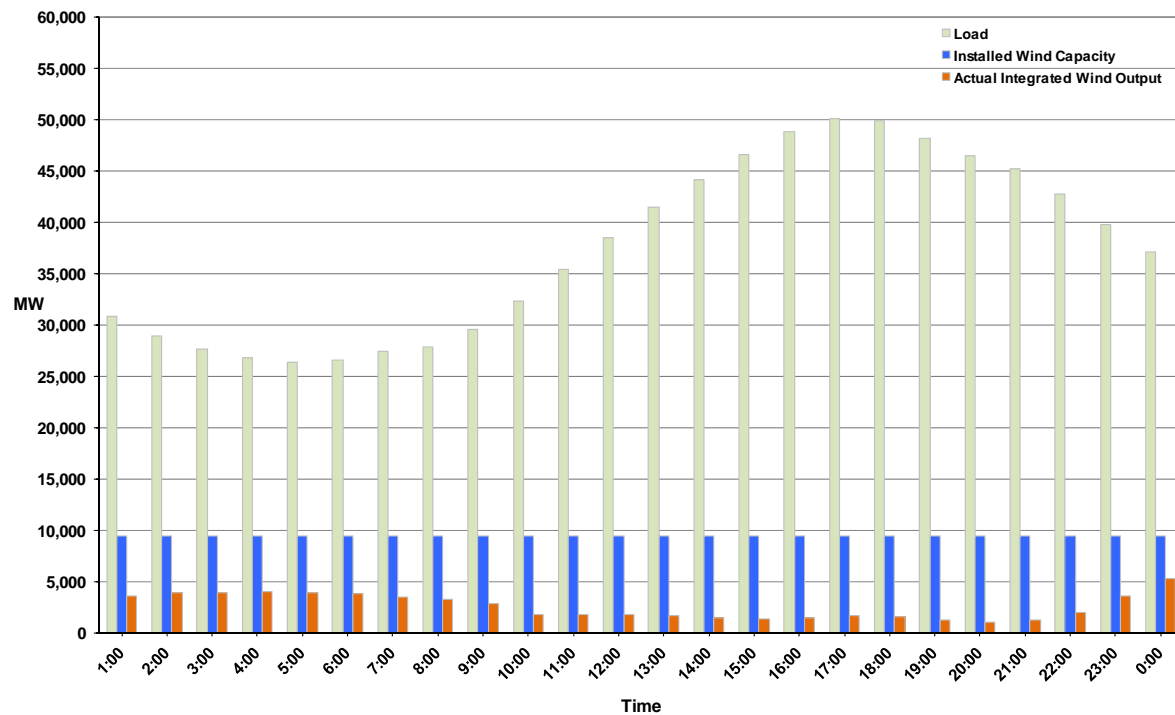




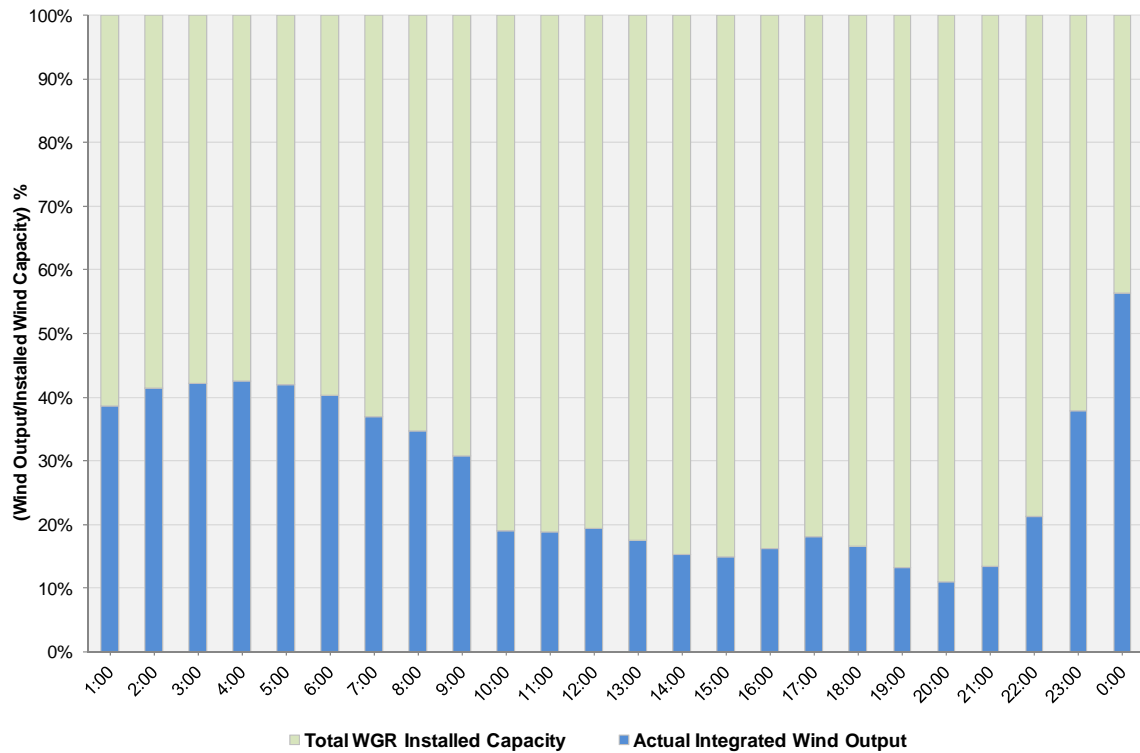
## ERCOT Grid Operations Wind Integration Report: 09/24/11

Peak Load	<b>50,100 MW</b>
Load Peak Hour	<b>17</b>
Wind over Peak	<b>1,701 MW</b>
Wind Record 06/19/11	<b>7,355 MW</b>
Max Wind Value	<b>5,570 MW</b>
Wind Peak Time	<b>23:41:00</b>
Wind Integration %	<b>15.21%</b>

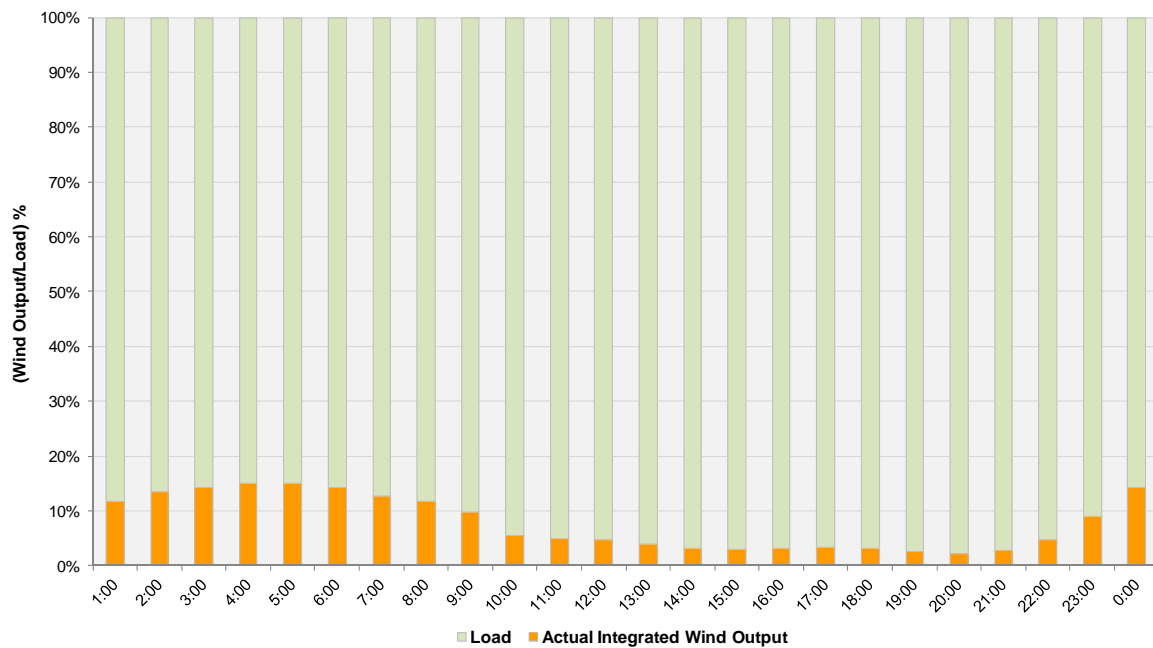
Hourly Average Actual Load vs. Actual Wind Output  
09-24-2011



**Actual Wind Output as a Percentage of the Total Installed Wind Capacity**  
**09-24-2011**



**Actual Wind Output as a Percentage of the ERCOT Load**  
**09-24-2011**



ERCOT Load vs. Actual Wind Output 9/17/2011 - 9/24/2011

